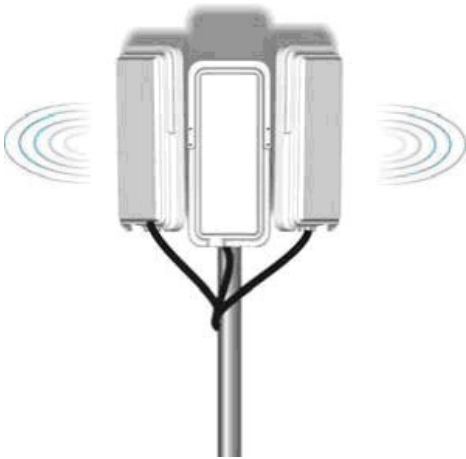




## A5 BASE STATION



**SKU: SILA5BS**

### ■ **What is the A5 BASE STATION?**

#### **802.11a Multi-sector Outdoor Access Point**

Featuring high-speed data transfer, sensitive reception and multipoint functionality, the A5 BASE STATION adopts OFDM and operates in the 5GHz band.

This cost-effective equipment provides companies and WISP's with powerful solutions. Moreover, it operates in access point mode and WDS simultaneously.

This equipment comes in with built-in 16 dBi 60° panel antenna.

### ■ **Features**

- Built-in lightning protector
- Centralized Network Management
- 6 X A5 BASE STATION will give 360° coverage
- 16dBi 60° panel antenna
- 5Ghz frequency range
- POE
- General UTP Ethernet interface, 10M/100M auto-negotiation.
- SNMP
- Point-to-Point , Point-to-Multipoint
- WDS, Radius, Router, Spanning tree and much more

### ■ **The advantages of the A5 BASE STATION**

● With 6 x A5 BASE STATION you can cover 360° at a range of 10km (using the built in antenna) making it ideal for WISP's.

The range can be extended to 40km using an external antenna.

● Stable and reliable network. Being Weatherproof and having a built-in Lightning Protector, the A5 BASE STATION is perfectly designed to meet the needs of the harshest outdoor environments.

● Simple network structure. Easy to install. Power over Ethernet functionality requires only a single Ethernet cable between the LAN and the A5 BASE STATION for sufficient power.

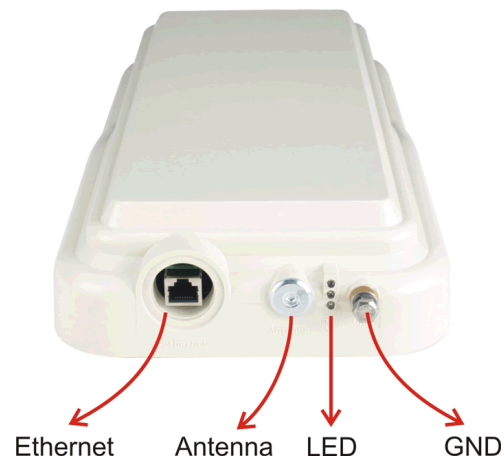
### **Contents**

- A5 BASE STATION \*1
- Mounting brackets \*1
- Product CD \*1
- Power Adapter(48V) \*1



Feature	
Data transfer rate	Best 54 48 36 24 18 12 9 6 Mbps
Access Point mode	Supported
Smart WDS	Supported
IP Routing	Supported
Any IP	Supported
Super A	Supported
Spanning Tree	Supported
Power Control	Supported
Link Test	Supported
Wireless Station List	Supported
Select antenna type	Supported
DHCP Client	DHCP Server, DHCP Client
Standards	IEEE802.11a IEEE802.3/u IEEE802.3af
Support protocol	TCP/IP IPX NETBEUI
Security	
WEP Encryption	64 / 128 / 152 bits
Radius	Supported
802.1x	Supported
WPA	Supported
WPA-PSK (TKIP)	Supported
WPA2-PSK (AES)	Supported
Access Control	Supported
SSID Broadcast	Hidden AP
Client Separator	Supported
VLAN	Multi BSSID
Physical	
Antenna	Built-in 16dBi 60° panel antenna
LAN/WAN	One 10/100BASE-T (RJ-45) Ethernet Port
Default button	Yes
Power	48VDC/1A Compliant to IEEE802.3af
Channel (Country Dependent)	USA (FCC): 5.15GHz 5.35GHz; 5.725GHz~5.825GHz Europe (ETSI): 5.47GHz 5.850GHz China: 5.725GHz 5.85GHz
RF output power	19dBm (± 3dB) + 16dB
Power Consumption	200mA@48V(Typical)
Sensitivity	-70dBm@54Mbps
Dimensions	37.6 x 18.2 x 6.05 (cm)
Weight	1.5Kg

Management	
WEB	Yes
SNMP MIB	Yes
Bandwidth Control	Yes
Environment	
Operating Temperature	-20~65℃
Storage Temperature	-20~80℃
Waterproof Grade	IP65



## A5 Series Product Information

### A5 18dBi CPE

#### Wireless Outdoor CPE

◆ Integrated 18dB antenna. Supports POE and 24V DC. Working at 5.8GHz with encryption. Client Mode.  
SKU: SILA5CP18

### A5 19dBi CPE

#### Wireless Outdoor CPE

◆ Integrated 19dB antenna. Supports POE and 24V DC. Working at 5.8GHz with encryption. Client Mode.  
SKU: SILA5CP

### A5 23dBi Dual

#### Dual-RF Outdoor Access Point

◆ Integrated 23dB antenna and External port with N Type connector. Supports POE and 48V DC. Can work at 2.4 GHz and 5.8GHz simultaneously.  
SKU: SILA5D

### A5 23dBi Integrated

#### Wireless Outdoor bridge

◆ Integrated 23dB antenna. Supports POE and 48V DC. Works at 5.8GHz with encryption. WDS (AP + Repeater). Link Test. 54Mbps.  
SKU: SILA5i

Distributed by:

Copyright © SilverNet Limited. All rights reserved. All other company and product names may be trademarks of their respective companies. Whilst every effort is made to make sure the information shown is accurate SilverNet Limited cannot accept liability for any errors that may arise.

No freedom to use information, patents, trade marks, or other intellectual property rights is implied by the publication of this document. E&OE

SilverNet Limited reserve the right to change specifications and other information within this document without notice and your attention is brought to the fact that performance figures are under ideal conditions. Actual performance will depend on many environmental factors and it is recommended that a site survey if undertaken prior to installation.

Please also note that this equipment may also be subject to local legislative restrictions such as Band C operation within the UK. It is the end users responsibility to ensure that the installation complies with any such restrictions that are in force.